











**REVIEWED**  
By Sarah Collins at 9:45 am, Jan 27, 2023

1/25/2023

**Worklist: 6226**

| <u>LAB_CASE</u> | <u>ITEM</u> | <u>ITEM_TYPE</u> | <u>DESCRIPTION</u>                              |  |
|-----------------|-------------|------------------|---|--|
| C2022-2701      | 1           | BCK              | AM 27 Blood THC Quant by LC-QQQ                 |   |
| C2022-2708      | 1           | BCK              | AM 27 Blood THC Quant by LC-QQQ                 |   |
| C2022-2710      | 1           | BCK              | AM 27 Blood THC Quant by LC-QQQ                 |   |
| C2022-2773      | 1           | BCK              | AM 27 Blood THC Quant by LC-QQQ                 |   |
| C2022-2818      | 1           | BCK              | AM 27 Blood THC Quant by LC-QQQ                 |   |
| C2022-2847      | 1           | BCK              | AM 27 Blood THC Quant by LC-QQQ                 |   |
| C2023-0058      | 1           | BCK              | AM 27 Blood THC Quant by LC-QQQ                 |   |
| C2023-0063      | 1           | BCK              | AM 27 Blood THC Quant by LC-QQQ                 |   |
| C2023-0089      | 1           | BCK              | AM 27 Blood THC Quant by LC-QQQ                 |   |
| C2023-0099      | 1           | UCK              | AM 27 Urine Cannabinoids Confirmation by LC-QQQ |  |

# AM# 27: Quantitation of THC and Metabolites in Blood and Urine by LC-MS/MS

Extraction Date 1/24/23  
Plate lot#: 220802

Analyst: Anne Nord  
Plate re-test: 2/2/23

**Mobile phase A:** 0.1% Formic Acid in LCMS Water  
MTBE LCMS Methanol

**Mobile phase B:** 0.1% Formic acid in Acetonitrile  
Hexane

**Blank Blood Lot:** 22B52016-1 **Urine Blank:** 12522  
**LCMS-QQQ ID:** 69679

**Column:** UCT Selectra DA 100 x 2.1mm 3um

## Pre-Analytic:

- 1. Check levels of mobile phases and needle wash refill as needed. Ensure waste is not full.
- 2. Ensure correct column is installed and begin mobile phase flow allow to equilibrate ~ 30 minutes.

## Analytic:

- 1. Remove standards, plate, controls, and samples from cold storage. Allow to reach room temperature.
- 2. Urine hydrolysis: add 1.5 ml urine to blank plate, add 250 ul 1N KOH mix and incubate at 40 degrees for 15 minutes.  
Pipette 1000µL blood (calibrated pipette) Pipette ID: I41142J in wells of analytical (standards) plate.
- 3. Place on shaking incubator at ambient temp., 900rpm for 15 minutes.
- 4. Pipette 500µL 0.1% formic acid in water blood sample, 500 ul saturated phosphate buffer in urine in wells of analytical plate.
- 5. Place on shaking incubator at ambient temp., 900rpm for 15 minutes.
- 6. Transfer 800µL of blood+acid or urine acid mixture to corresponding wells of SLE+ plate.
- 7. Apply positive pressure for approx. 10-15 seconds (or until no liquid remains on top of sorbent).  
*(Load at 85-100 PSI- Selector to the right)* Manifold ID: 66792
- 8. Wait 5 minutes.
- 9. Add 2.25mL MTBE. *(Add in 3 increments of 750uL)*
- 10. Wait 5 minutes.
- 11. Apply positive pressure for approx. 15 seconds. *(10-15 PSI- Selector to the left).*
- 12. Add 2.25mL Hexane. *(Add in 3 increments of 750uL)*
- 13. Wait 5 minutes.
- 14. Apply positive pressure for approx. 15 seconds. *(10-15 PSI- Selector to the left).*
- 15. Remove plate containing eluate. Place on SPE Dry and evaporate to dryness at approx. 35°C.  
*SPE Dry ID: 66819*
- 16. Reconstitute in 100µL 100% MeOH and heat seal plate with foil. Place in autosampler and run worklist.

## Post-Analytic

- 1. Create batch and process data.
- 2. Make any necessary integration changes, Curve weighting of Linear 1/x with  $r^2$  values  $\geq 0.98$  for each analyte
- 3. RT +/- 3% or 0.100 min, whichever is greater, +/- 20% Accuracy for greater than (+/- 30% for 10ng/ml or less). Ion ratios must be within +/- 20% of the averaged calibrators
- 4. Case sample response for THC 1ng/ml, OH-THC 3ng/mL (quantitative blood), Carboxy-THC: 5 ng/mL (qualitative only) will be reported. Samples with a THC or OH-THC response over 50 ng/mL will be reported out as greater than 50 ng/mL.
- 5. Did all QCs pass for each analyte? (if not is it describe in comments section)
- 6. Enter QCs into control charting.
- 7. Central File Packet to include: LIMS Worklist, Method Checklist, Calibration and Control Reports

COMMENTS: *THC-OH evaluated qualitatively due to baseline being high in samples.*

THC limit of quantitation 3 ng, limit of detection response of 1ng or greater.

|   | 1                           | 2                                       | 3  | 4 | 5                                      | 6 |
|---|-----------------------------|---|--|---|--|---|
| a | cal 1                       | internal control<br>Blood urine 1/27/23 | c2023-0058-1                                       |   |  |   |
| b | cal 2                       | negative blood                          | c2023-0063-1                                       |   |  |   |
| c | cal 3                       | 2701-1                                  | c2023-0089-1                                       |   |  |   |
| d | cal 4                       | 2708-1 mixing<br>plate                  | negative urine                                     |   |  |   |
| e | Cal 5                       | 2710-1                                  | c2023-0099-1                                       |   |  |   |
| f | cal 6                       | 2773-1                                  | Internal control urine<br>SLE and injection plate. |   |  |   |
| g | cal 7                       | 2818-1                                  | 2708-1 SLE and<br>injection                        |   |  |   |
| h | Internal control<br>(blood) | 2847-1                                  |  |   | internal control urine<br>mixing plate |   |

Plate position 3

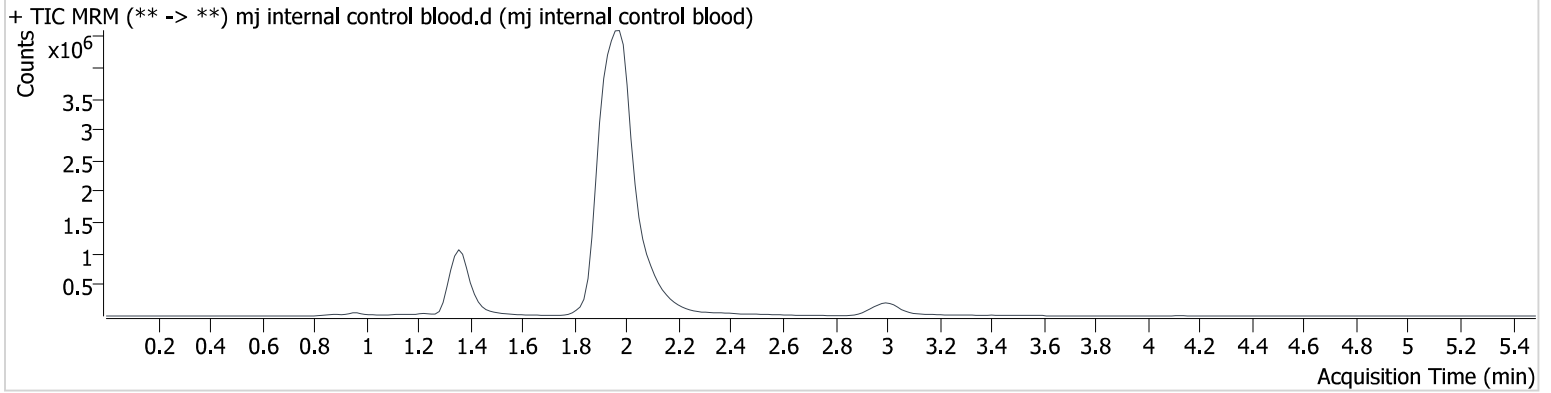
c2022-\_\_\_\_-\_\_

# AM #27 Cannabinoids

**Batch results** D:\MassHunter\Data\2023\am 27-28\012323\QuantResults\cann.batch.bin  
**Calibration Last Update** 1/25/2023 1:17:14 PM

**Instrument** 69679 **Data File** mj internal control blood.d  
**Type** QC **Sample** mj internal control blood  
**Acq. Method** AM 27 THC quant.m **Operator** Anne Nord  
**Sample Position** P3-H1 **Comment**  
**Injection Volume** 10  
**Acq. Date-Time** 1/24/2023 12:34:45 PM  
**Sample Info.**

## Sample Chromatogram



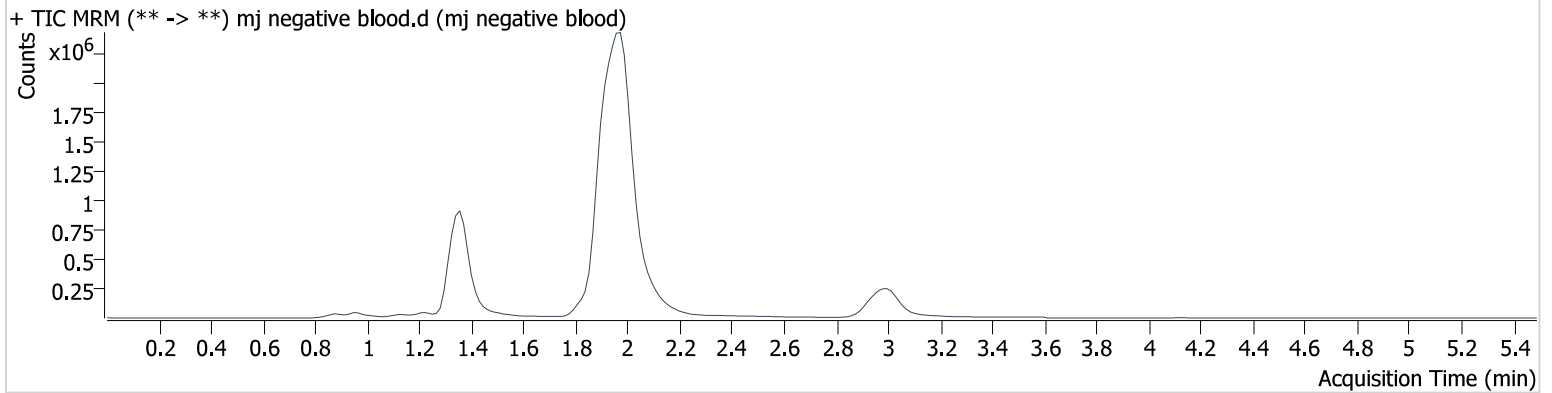
| Name     | RT    | Resp.  | S/N    | Ratio  | S/N   | ISTD Resp. | Final Conc.  |
|----------|-------|--------|--------|--------|-------|------------|--------------|
| THC-OH   | 1.364 | 56571  | ∞      | 956.07 | ∞     | 3183121    | 4.551 ng/ml  |
| THC-COOH | 1.388 | 78681  | 438.0  | 241.77 | ∞     | 986407     | 14.629 ng/ml |
| THC      | 3.016 | 165192 | 7210.7 | 23.94  | 136.3 | 1328420    | 4.730 ng/ml  |

# AM #27 Cannabinoids

**Batch results** D:\MassHunter\Data\2023\am 27-28\012323\QuantResults\cann.batch.bin  
**Calibration Last Update** 1/25/2023 1:17:14 PM

|                         |                       |                  |                     |
|-------------------------|-----------------------|------------------|---------------------|
| <b>Instrument</b>       | 69679                 | <b>Data File</b> | mj negative blood.d |
| <b>Type</b>             | Sample                | <b>Sample</b>    | mj negative blood   |
| <b>Acq. Method</b>      | AM 27 THC quant.m     | <b>Operator</b>  | Anne Nord           |
| <b>Sample Position</b>  | P3-B2                 | <b>Comment</b>   |                     |
| <b>Injection Volume</b> | 10                    |                  |                     |
| <b>Acq. Date-Time</b>   | 1/24/2023 12:41:20 PM |                  |                     |
| <b>Sample Info.</b>     |                       |                  |                     |

## Sample Chromatogram

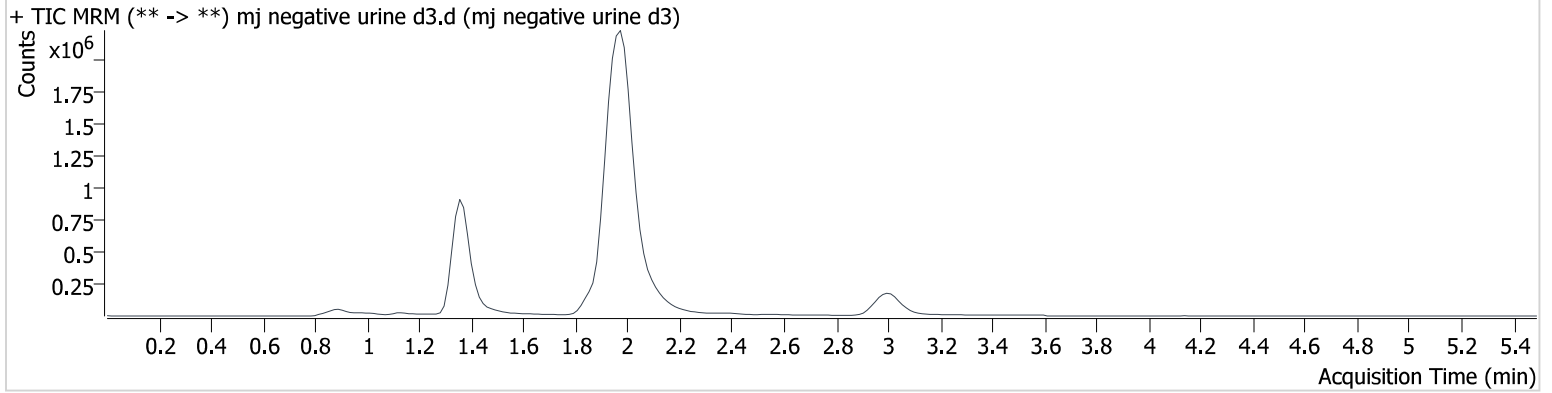


# AM #27 Cannabinoids

**Batch results** D:\MassHunter\Data\2023\am 27-28\012323\QuantResults\cann.batch.bin  
**Calibration Last Update** 1/25/2023 1:17:14 PM

|                         |                      |                  |                        |
|-------------------------|----------------------|------------------|------------------------|
| <b>Instrument</b>       | 69679                | <b>Data File</b> | mj negative urine d3.d |
| <b>Type</b>             | Sample               | <b>Sample</b>    | mj negative urine d3   |
| <b>Acq. Method</b>      | AM 27 THC quant.m    | <b>Operator</b>  | Anne Nord              |
| <b>Sample Position</b>  | P3-D3                | <b>Comment</b>   |                        |
| <b>Injection Volume</b> | 10                   |                  |                        |
| <b>Acq. Date-Time</b>   | 1/24/2023 2:53:10 PM |                  |                        |
| <b>Sample Info.</b>     |                      |                  |                        |

## Sample Chromatogram

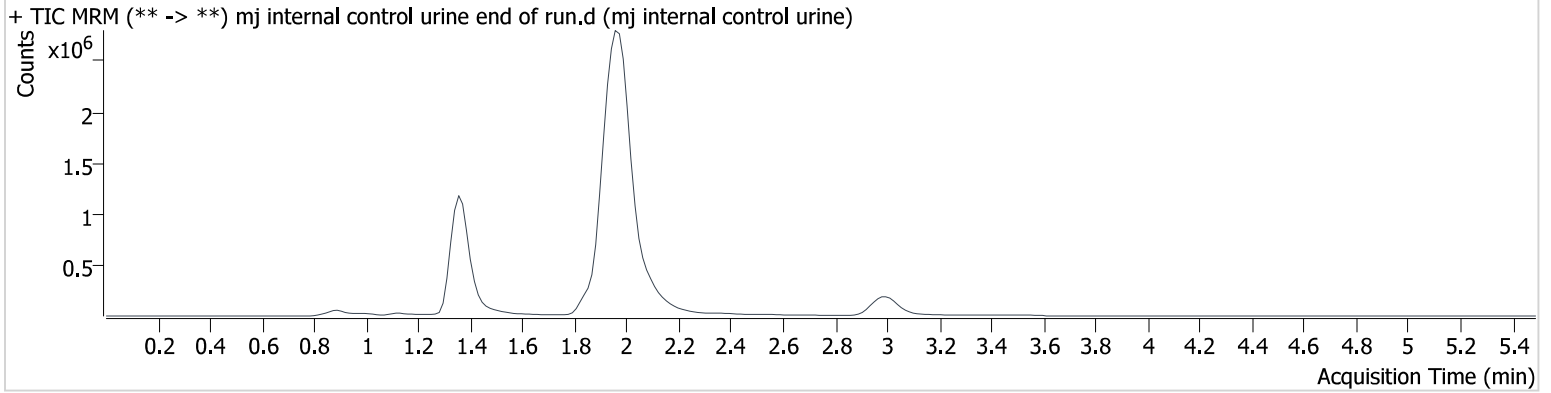


# AM #27 Cannabinoids

**Batch results** D:\MassHunter\Data\2023\am 27-28\012323\QuantResults\cann.batch.bin  
**Calibration Last Update** 1/25/2023 1:17:14 PM

|                         |                      |                  |  |
|-------------------------|----------------------|------------------|--|
| <b>Instrument</b>       | 69679                | <b>Data File</b> | mj internal control urine end of run.d |
| <b>Type</b>             | Sample               | <b>Sample</b>    | mj internal control urine              |
| <b>Acq. Method</b>      | AM 27 THC quant.m    | <b>Operator</b>  | Anne Nord                              |
| <b>Sample Position</b>  | P3-F3                | <b>Comment</b>   |  |
| <b>Injection Volume</b> | 10                   |                  |  |
| <b>Acq. Date-Time</b>   | 1/24/2023 3:12:58 PM |                  |  |
| <b>Sample Info.</b>     |                      |                  |  |

## Sample Chromatogram



| Name     | RT    | Resp.  | S/N    | Ratio  | S/N   | ISTD Resp. | Final Conc.  |
|----------|-------|--------|--------|--------|-------|------------|--------------|
| THC-OH   | 1.364 | 62420  | ∞      | 915.45 | ∞     | 3504383    | 4.560 ng/ml  |
| THC-COOH | 1.388 | 82571  | ∞      | 273.46 | ∞     | 1078864    | 14.108 ng/ml |
| THC      | 3.001 | 141123 | 1910.1 | 23.35  | 160.4 | 1181333    | 4.563 ng/ml  |

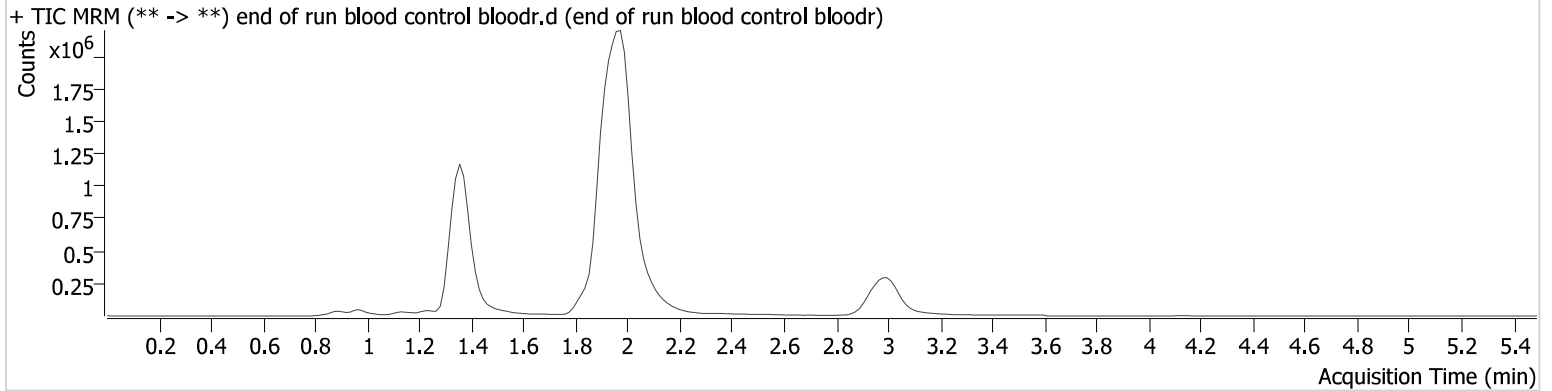
# AM #27 Cannabinoids

**Batch results** D:\MassHunter\Data\2023\am 27-28\012323\QuantResults\cann.batch.bin  
**Calibration Last Update** 1/25/2023 1:17:14 PM

|                         |                      |                  |                                   |
|-------------------------|----------------------|------------------|-----------------------------------|
| <b>Instrument</b>       | 69679                | <b>Data File</b> | end of run blood control bloodr.d |
| <b>Type</b>             | Sample               | <b>Sample</b>    | end of run blood control bloodr   |
| <b>Acq. Method</b>      | AM 27 THC quant.m    | <b>Operator</b>  | Anne Nord                         |
| <b>Sample Position</b>  | P3-A2                | <b>Comment</b>   |                                   |
| <b>Injection Volume</b> | 10                   |                  |                                   |
| <b>Acq. Date-Time</b>   | 1/24/2023 3:19:32 PM |                  |                                   |

**Sample Info.**

## Sample Chromatogram



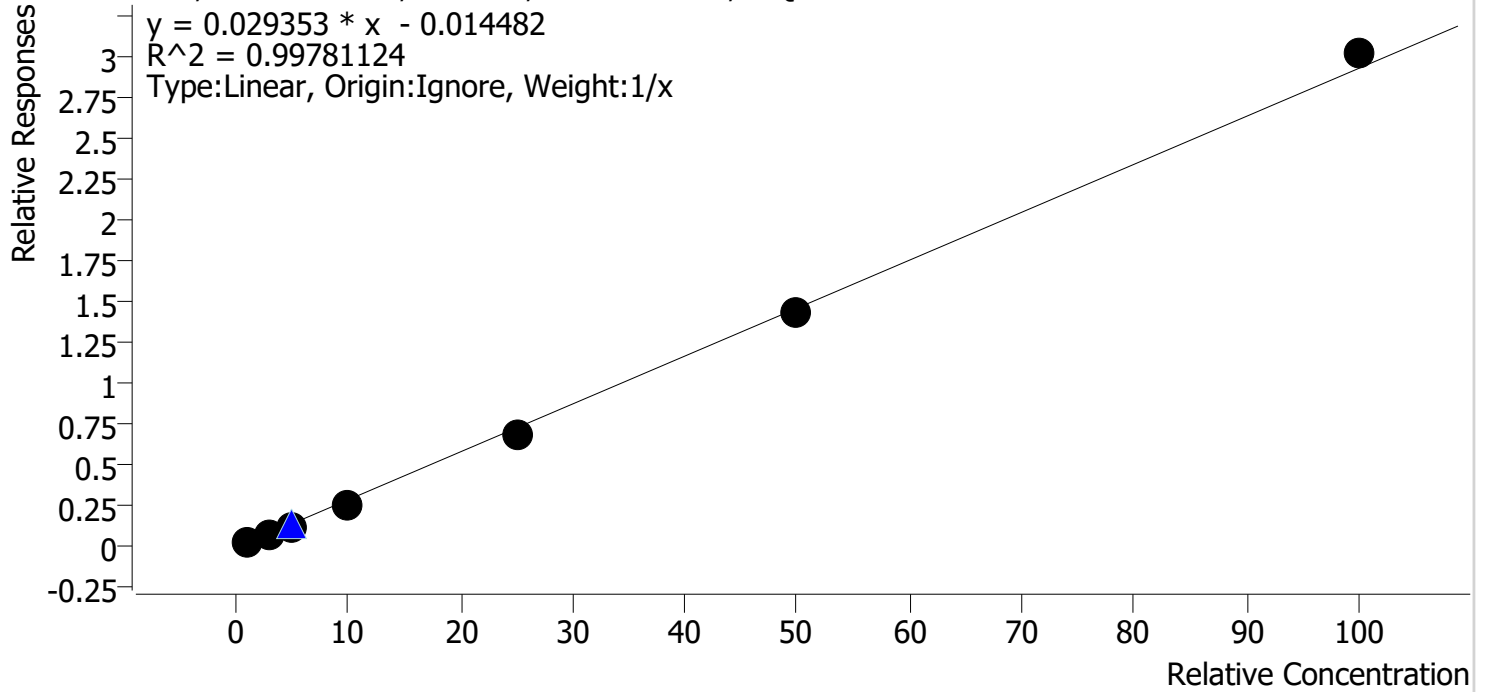
| Name     | RT    | Resp.  | S/N    | Ratio  | S/N    | ISTD Resp. | Final Conc.  |
|----------|-------|--------|--------|--------|--------|------------|--------------|
| THC-OH   | 1.364 | 62228  | ∞      | 978.98 | ∞      | 3585513    | 4.454 ng/ml  |
| THC-COOH | 1.388 | 91006  | 2678.4 | 249.77 | 1853.9 | 1145991    | 14.572 ng/ml |
| THC      | 3.001 | 239933 | 1284.0 | 23.98  | 763.3  | 1974700    | 4.633 ng/ml  |



# Compound Calibration Report

**Batch results** D:\MassHunter\Data\2023\am 27-28\012323\QuantResults\cann.batch.bin  
**Last Cal. Update** 1/25/2023 1:17 PM  
**Analyst Name** ISP\datastor  
**Analyte** THC **Internal Standard** THC-d3

THC - 7 Levels, 7 Levels Used, 7 Points, 7 Points Used, 1 QCs



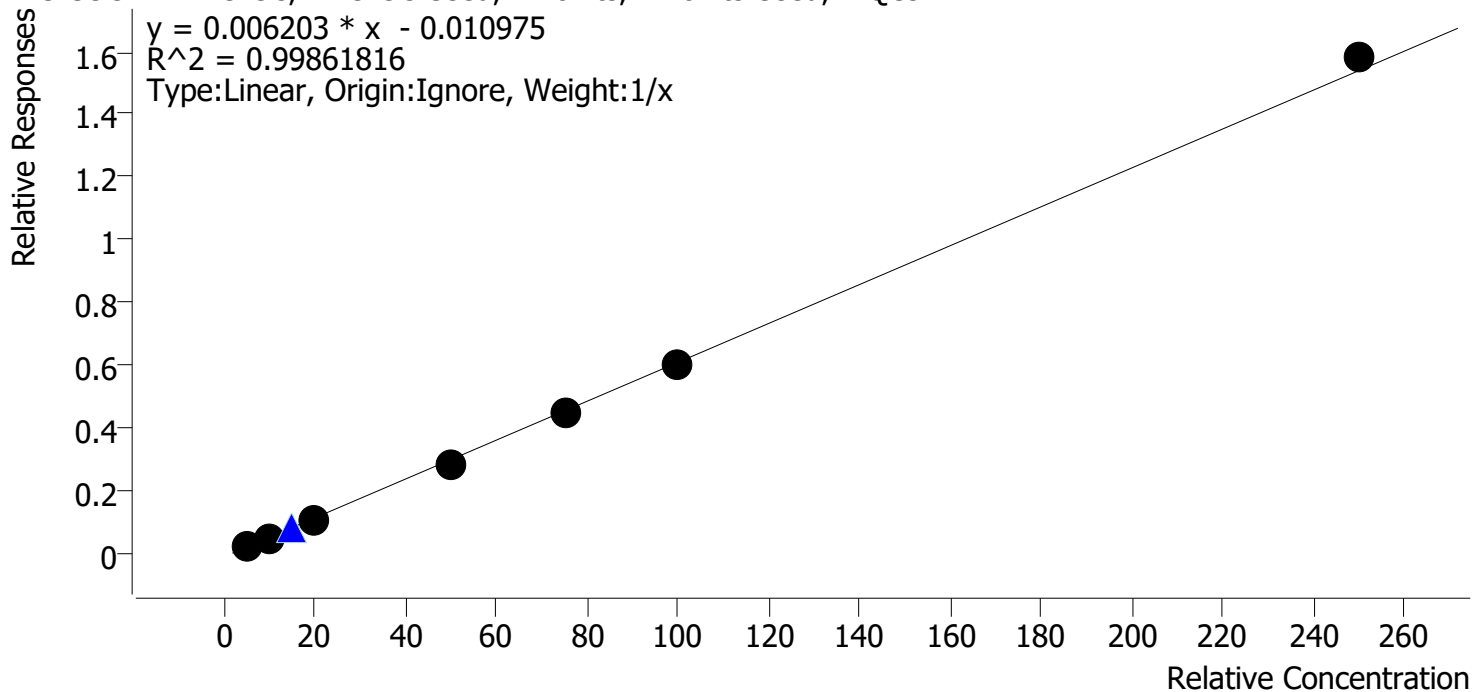
| Sample   | Level | Enabled | Expected Concentration | Final Concentration | Accuracy |
|----------|-------|---------|------------------------|---------------------|----------|
| mj cal 1 | 1     | ✓       | 1.0                    | 1.3                 | 126.3    |
| mj cal 2 | 2     | ✓       | 3.0                    | 2.8                 | 94.7     |
| mj cal 3 | 3     | ✓       | 5.0                    | 4.6                 | 91.6     |
| mj cal 4 | 4     | ✓       | 10.0                   | 9.0                 | 90.0     |
| mj cal 5 | 5     | ✓       | 25.0                   | 23.9                | 95.5     |
| mj cal 6 | 6     | ✓       | 50.0                   | 49.4                | 98.8     |
| mj cal 7 | 7     | ✓       | 100.0                  | 103.0               | 103.0    |

# Compound Calibration Report

**Batch results** D:\MassHunter\Data\2023\am 27-28\012323\QuantResults\cann.batch.bin  
**Last Cal. Update** 1/25/2023 1:17 PM  
**Analyst Name** ISP\datastor  
**Analyte** THC-COOH

**Internal Standard** THC-COOH-d9

THC-COOH - 7 Levels, 7 Levels Used, 7 Points, 7 Points Used, 1 QCs

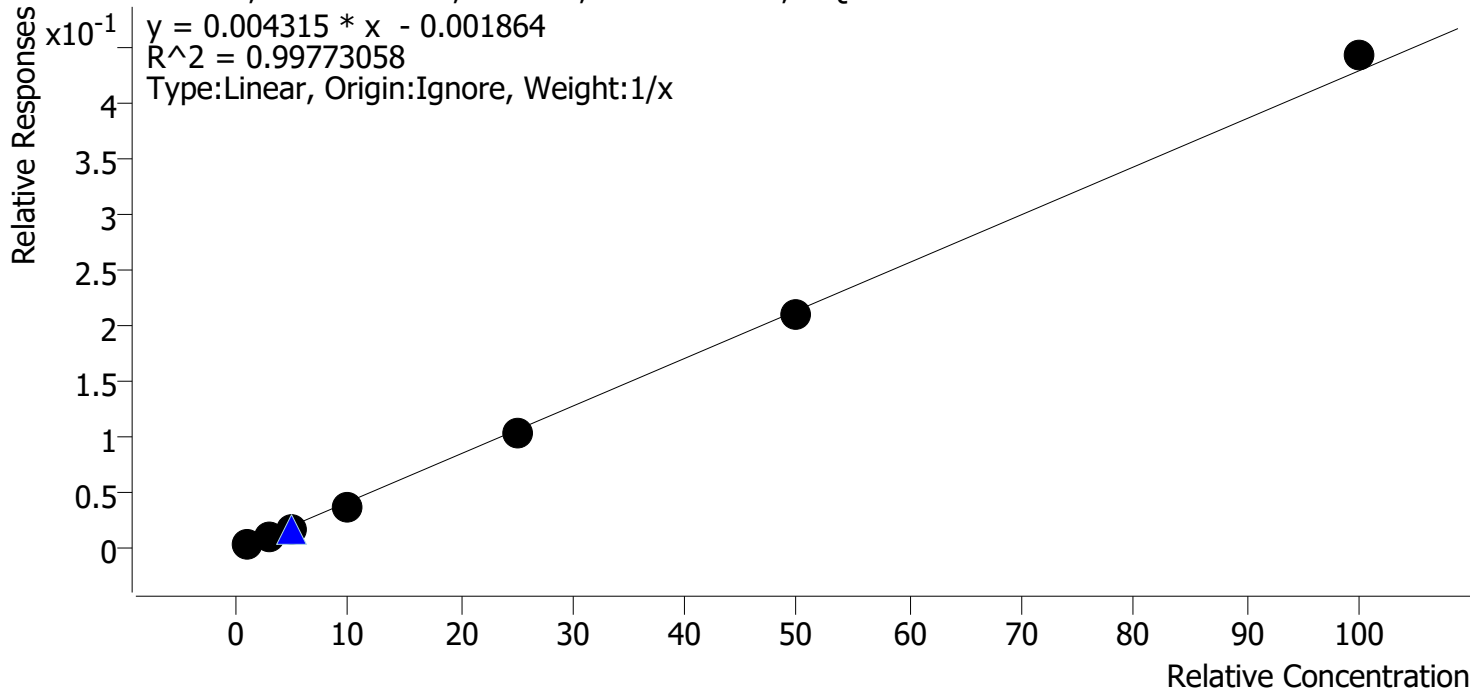


| Sample   | Level | Enabled | Expected Concentration | Final Concentration | Accuracy |
|----------|-------|---------|------------------------|---------------------|----------|
| mj cal 1 | 1     | ✓       | 5.0                    | 5.6                 | 112.5    |
| mj cal 2 | 2     | ✓       | 10.0                   | 10.0                | 99.9     |
| mj cal 3 | 3     | ✓       | 20.0                   | 18.8                | 94.2     |
| mj cal 4 | 4     | ✓       | 50.0                   | 47.3                | 94.6     |
| mj cal 5 | 5     | ✓       | 75.0                   | 73.4                | 97.9     |
| mj cal 6 | 6     | ✓       | 100.0                  | 98.2                | 98.2     |
| mj cal 7 | 7     | ✓       | 250.0                  | 256.6               | 102.7    |

# Compound Calibration Report

**Batch results** D:\MassHunter\Data\2023\am 27-28\012323\QuantResults\cann.batch.bin  
**Last Cal. Update** 1/25/2023 1:17 PM  
**Analyst Name** ISP\datastor  
**Analyte** THC-OH **Internal Standard** THC-OH-d3

THC-OH - 7 Levels, 7 Levels Used, 7 Points, 7 Points Used, 1 QCs



| Sample   | Level | Enabled | Expected Concentration | Final Concentration | Accuracy |
|----------|-------|---------|------------------------|---------------------|----------|
| mj cal 1 | 1     | ✓       | 1.0                    | 1.3                 | 128.1    |
| mj cal 2 | 2     | ✓       | 3.0                    | 2.8                 | 93.3     |
| mj cal 3 | 3     | ✓       | 5.0                    | 4.5                 | 90.2     |
| mj cal 4 | 4     | ✓       | 10.0                   | 9.1                 | 90.9     |
| mj cal 5 | 5     | ✓       | 25.0                   | 24.0                | 96.0     |
| mj cal 6 | 6     | ✓       | 50.0                   | 49.2                | 98.3     |
| mj cal 7 | 7     | ✓       | 100.0                  | 103.2               | 103.2    |

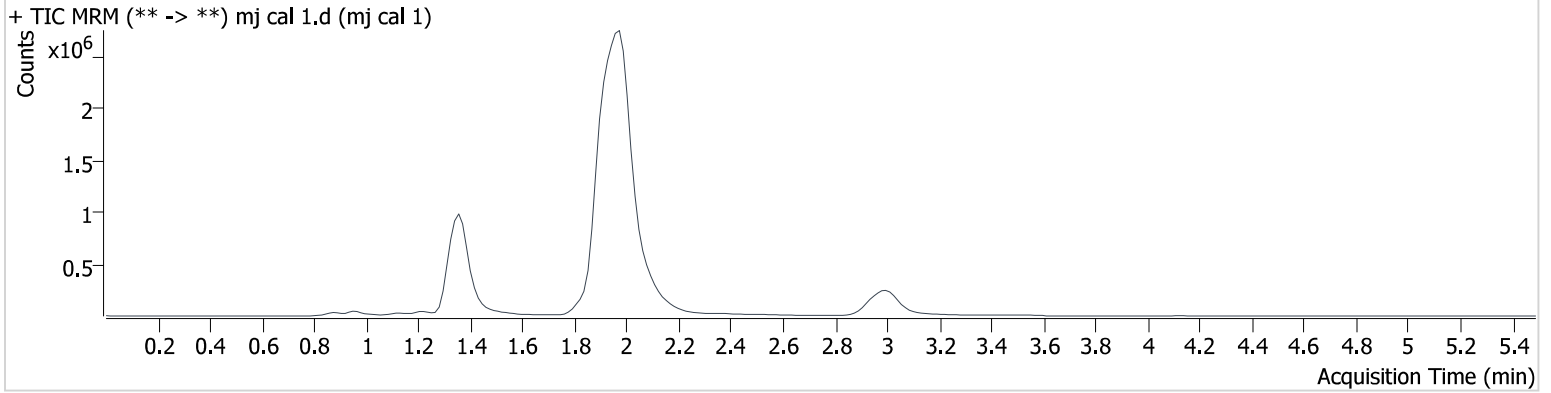
# AM #27 Cannabinoids

**Batch results** D:\MassHunter\Data\2023\am 27-28\012323\QuantResults\cann.batch.bin  
**Calibration Last Update** 1/25/2023 1:17:14 PM

**Instrument** 69679  
**Type** Cal  
**Acq. Method** AM 27 THC quant.m  
**Sample Position** P3-A1  
**Injection Volume** 10  
**Acq. Date-Time** 1/24/2023 11:48:31 AM  
**Sample Info.**

**Data File** mj cal 1.d  
**Sample** mj cal 1  
**Operator** Anne Nord  
**Comment**

## Sample Chromatogram



| Name     | RT    | Resp. | S/N   | Ratio  | S/N   | ISTD Resp. | Final Conc.            |
|----------|-------|-------|-------|--------|-------|------------|------------------------|
| THC-OH   | 1.364 | 13123 | ∞     | 953.52 | ∞     | 3582950    | 1.281 ng/ml <b>Low</b> |
| THC-COOH | 1.388 | 27026 | ∞     | 274.66 | 132.3 | 1129469    | 5.627 ng/ml            |
| THC      | 3.016 | 41803 | 289.4 | 22.07  | 62.2  | 1850202    | 1.263 ng/ml            |

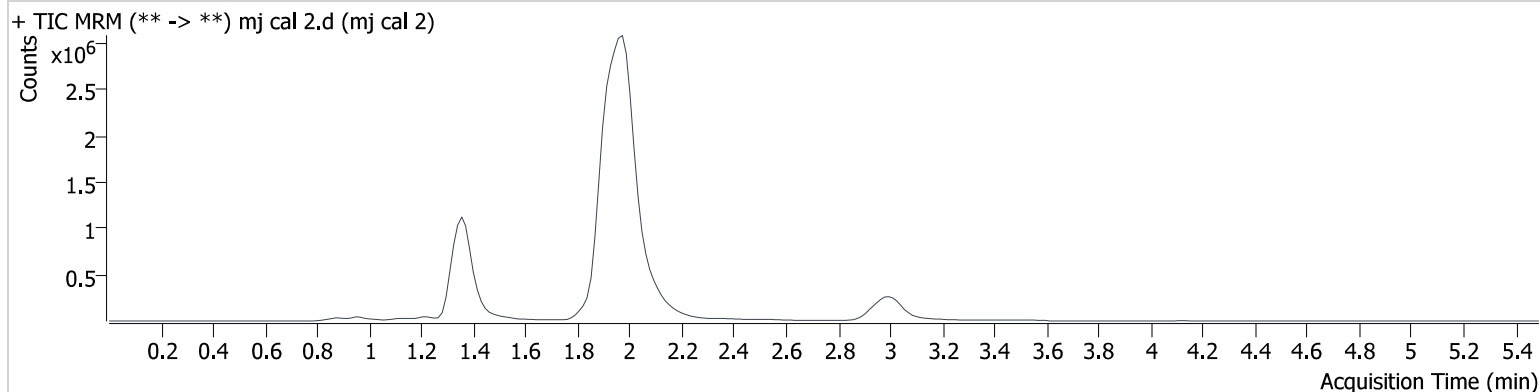
# AM #27 Cannabinoids

**Batch results** D:\MassHunter\Data\2023\am 27-28\012323\QuantResults\cann.batch.bin  
**Calibration Last Update** 1/25/2023 1:17:14 PM

**Instrument** 69679  
**Type** Cal  
**Acq. Method** AM 27 THC quant.m  
**Sample Position** P3-B1  
**Injection Volume** 10  
**Acq. Date-Time** 1/24/2023 11:55:15 AM  
**Sample Info.**

**Data File** mj cal 2.d  
**Sample** mj cal 2  
**Operator** Anne Nord  
**Comment**

## Sample Chromatogram



| Name     | RT    | Resp.  | S/N    | Ratio  | S/N   | ISTD Resp. | Final Conc.            |
|----------|-------|--------|--------|--------|-------|------------|------------------------|
| THC-OH   | 1.364 | 38665  | 191.1  | 969.12 | ∞     | 3787534    | 2.798 ng/ml <b>Low</b> |
| THC-COOH | 1.388 | 59465  | 884.4  | 262.20 | ∞     | 1165624    | 9.994 ng/ml            |
| THC      | 3.016 | 129497 | 1381.9 | 25.26  | 137.4 | 1879577    | 2.841 ng/ml            |

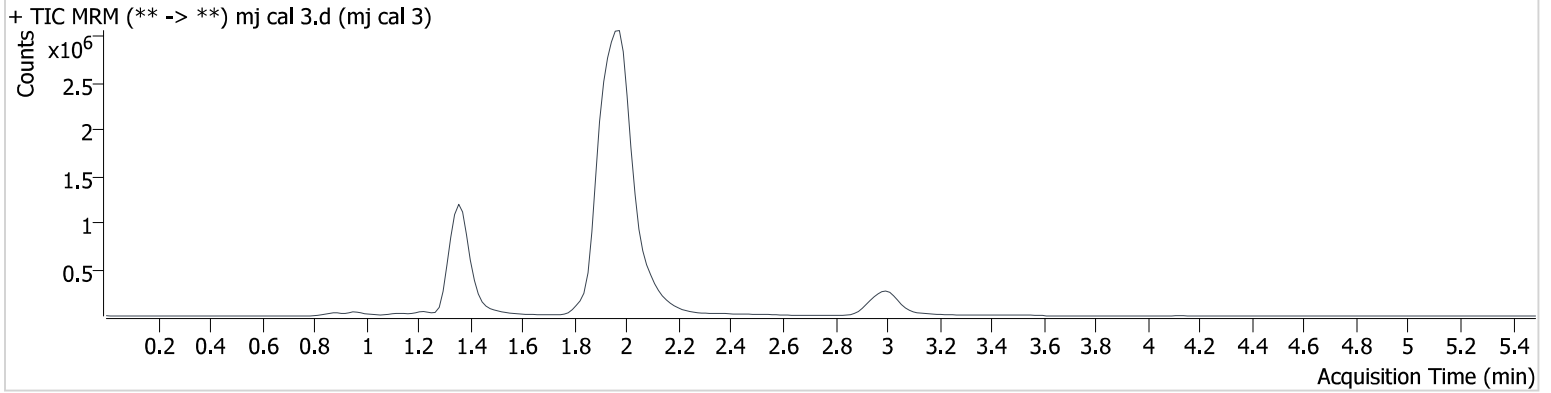
# AM #27 Cannabinoids

**Batch results** D:\MassHunter\Data\2023\am 27-28\012323\QuantResults\cann.batch.bin  
**Calibration Last Update** 1/25/2023 1:17:14 PM

**Instrument** 69679  
**Type** Cal  
**Acq. Method** AM 27 THC quant.m  
**Sample Position** P3-C1  
**Injection Volume** 10  
**Acq. Date-Time** 1/24/2023 12:01:51 PM  
**Sample Info.**

**Data File** mj cal 3.d  
**Sample** mj cal 3  
**Operator** Anne Nord  
**Comment**

## Sample Chromatogram



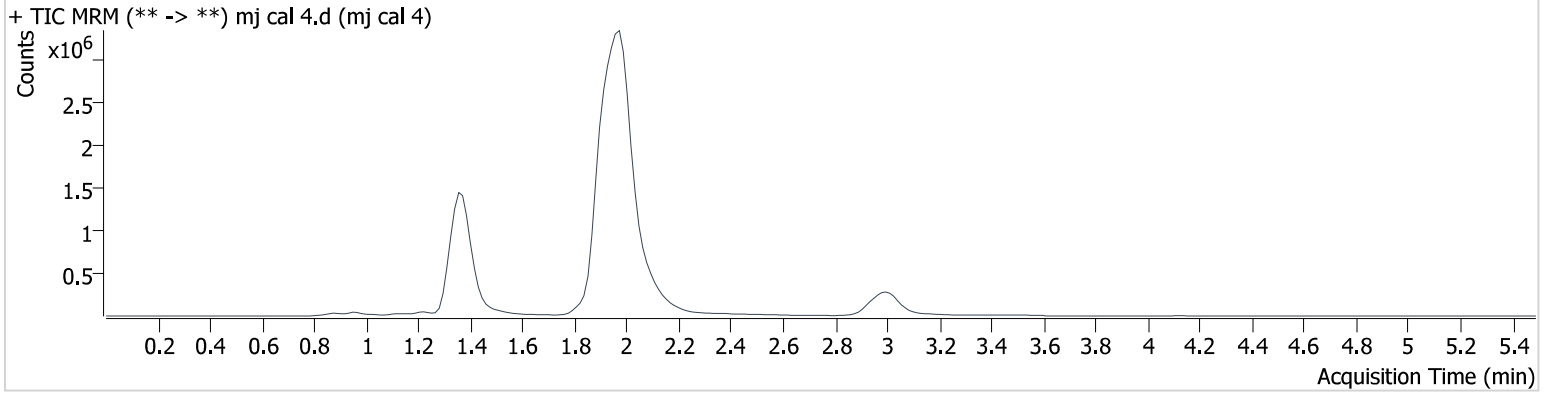
| Name     | RT    | Resp.  | S/N    | Ratio  | S/N      | ISTD Resp. | Final Conc.  |
|----------|-------|--------|--------|--------|----------|------------|--------------|
| THC-OH   | 1.364 | 62938  | 1336.0 | 983.96 | $\infty$ | 3575635    | 4.511 ng/ml  |
| THC-COOH | 1.388 | 119030 | 581.2  | 261.55 | $\infty$ | 1124306    | 18.838 ng/ml |
| THC      | 3.016 | 213875 | 2201.6 | 23.79  | 538.5    | 1782436    | 4.581 ng/ml  |

# AM #27 Cannabinoids

**Batch results** D:\MassHunter\Data\2023\am 27-28\012323\QuantResults\cann.batch.bin  
**Calibration Last Update** 1/25/2023 1:17:14 PM

**Instrument** 69679 **Data File** mj cal 4.d  
**Type** Cal **Sample** mj cal 4  
**Acq. Method** AM 27 THC quant.m **Operator** Anne Nord  
**Sample Position** P3-D1 **Comment**  
**Injection Volume** 10  
**Acq. Date-Time** 1/24/2023 12:08:27 PM  
**Sample Info.**

## Sample Chromatogram



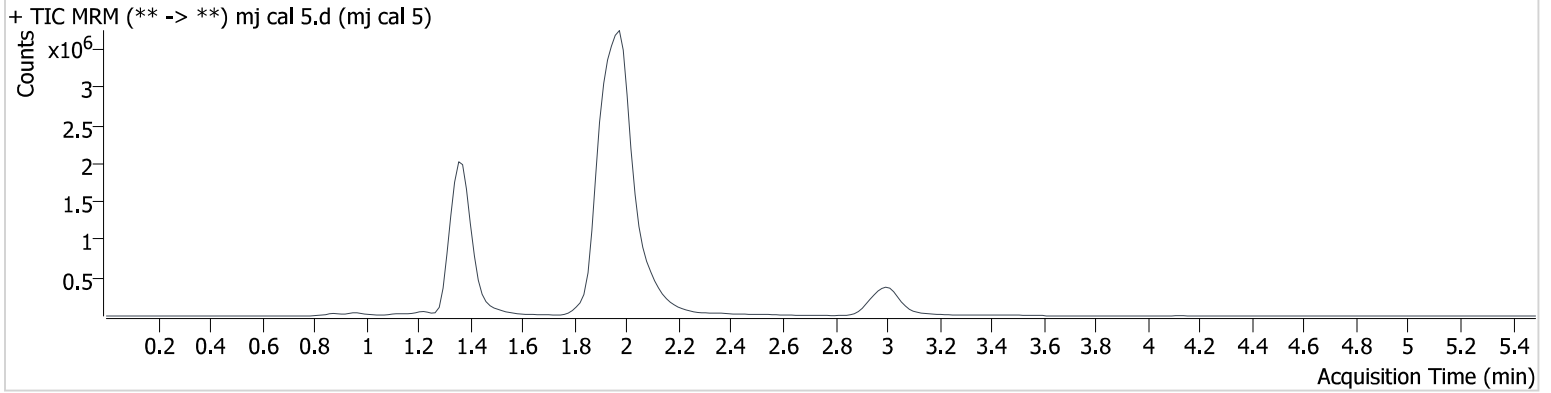
| Name     | RT    | Resp.  | S/N    | Ratio  | S/N    | ISTD Resp. | Final Conc.  |
|----------|-------|--------|--------|--------|--------|------------|--------------|
| THC-OH   | 1.364 | 124688 | ∞      | 914.59 | ∞      | 3337259    | 9.091 ng/ml  |
| THC-COOH | 1.388 | 292164 | 1751.3 | 255.53 | 4507.1 | 1034445    | 47.303 ng/ml |
| THC      | 3.001 | 409942 | 4209.6 | 23.74  | 370.8  | 1641035    | 9.004 ng/ml  |

# AM #27 Cannabinoids

**Batch results** D:\MassHunter\Data\2023\am 27-28\012323\QuantResults\cann.batch.bin  
**Calibration Last Update** 1/25/2023 1:17:14 PM

**Instrument** 69679 **Data File** mj cal 5.d  
**Type** Cal **Sample** mj cal 5  
**Acq. Method** AM 27 THC quant.m **Operator** Anne Nord  
**Sample Position** P3-E1 **Comment**  
**Injection Volume** 10  
**Acq. Date-Time** 1/24/2023 12:15:03 PM  
**Sample Info.**

## Sample Chromatogram



| Name     | RT    | Resp.   | S/N     | Ratio  | S/N    | ISTD Resp. | Final Conc.  |
|----------|-------|---------|---------|--------|--------|------------|--------------|
| THC-OH   | 1.364 | 350689  | ∞       | 847.63 | ∞      | 3446979    | 24.011 ng/ml |
| THC-COOH | 1.388 | 459719  | 8554.5  | 248.63 | ∞      | 1034417    | 73.418 ng/ml |
| THC      | 3.016 | 1093421 | 77927.9 | 23.44  | 1135.4 | 1592795    | 23.881 ng/ml |



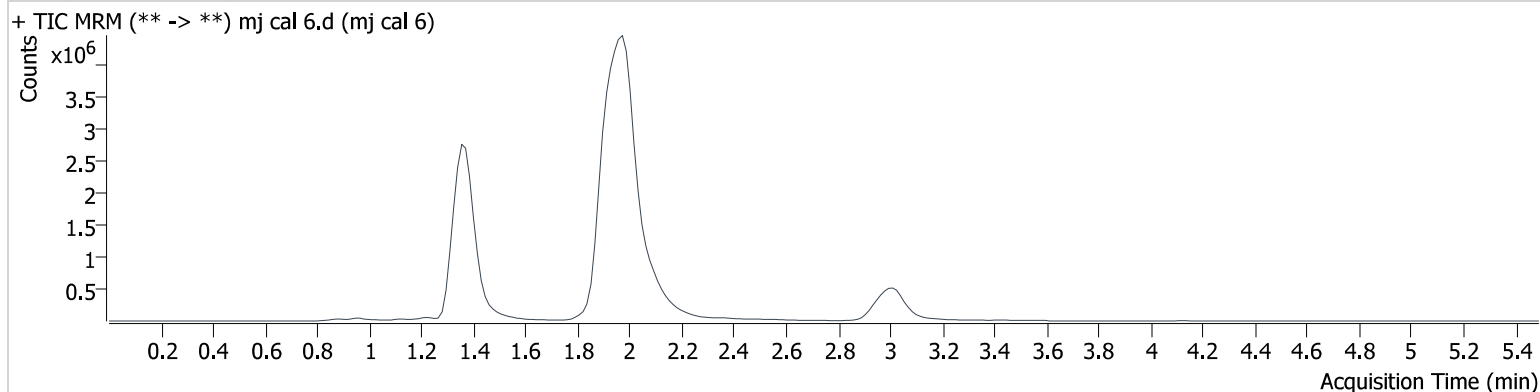
# AM #27 Cannabinoids

**Batch results** D:\MassHunter\Data\2023\am 27-28\012323\QuantResults\cann.batch.bin  
**Calibration Last Update** 1/25/2023 1:17:14 PM

|                         |                       |                  |            |
|-------------------------|-----------------------|------------------|------------|
| <b>Instrument</b>       | 69679                 | <b>Data File</b> | mj cal 6.d |
| <b>Type</b>             | Cal                   | <b>Sample</b>    | mj cal 6   |
| <b>Acq. Method</b>      | AM 27 THC quant.m     | <b>Operator</b>  | Anne Nord  |
| <b>Sample Position</b>  | P3-F1                 | <b>Comment</b>   |            |
| <b>Injection Volume</b> | 10                    |                  |            |
| <b>Acq. Date-Time</b>   | 1/24/2023 12:21:37 PM |                  |            |

**Sample Info.**

## Sample Chromatogram



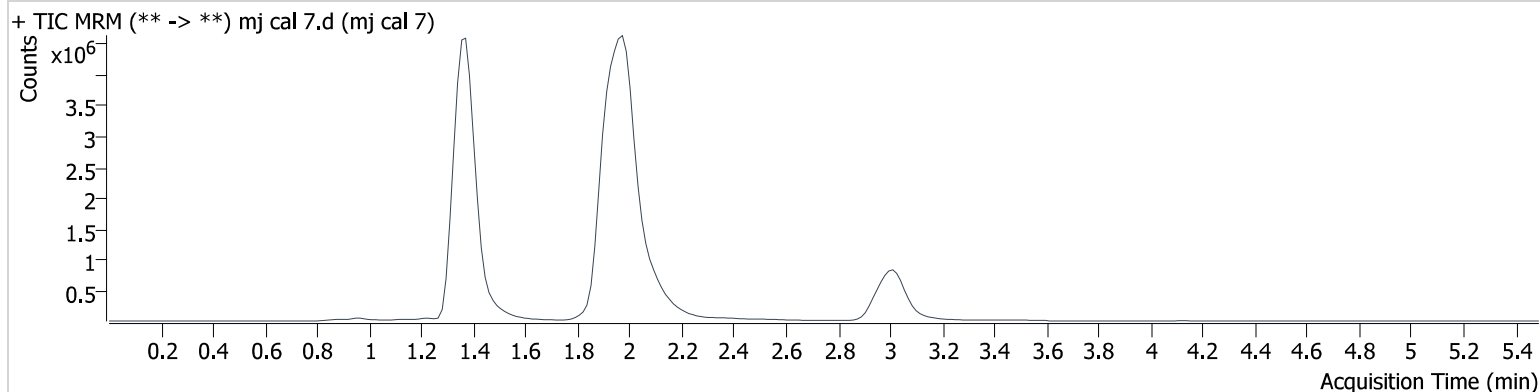
| Name     | RT    | Resp.   | S/N                    | Ratio  | S/N         | ISTD Resp. | Final Conc.  |
|----------|-------|---------|------------------------|--------|-------------|------------|--------------|
| THC-OH   | 1.364 | 711890  | 4270.7                 | 832.51 | ∞           | 3386435    | 49.153 ng/ml |
| THC-COOH | 1.388 | 590346  | 1470.0                 | 242.33 | ∞           | 987239     | 98.174 ng/ml |
| THC      | 3.016 | 2094730 | 1679092849<br>457980.0 | 23.68  | 11993.<br>8 | 1459666    | 49.384 ng/ml |

# AM #27 Cannabinoids

**Batch results** D:\MassHunter\Data\2023\am 27-28\012323\QuantResults\cann.batch.bin  
**Calibration Last Update** 1/25/2023 1:17:14 PM

|                         |                       |                  |            |
|-------------------------|-----------------------|------------------|------------|
| <b>Instrument</b>       | 69679                 | <b>Data File</b> | mj cal 7.d |
| <b>Type</b>             | Cal                   | <b>Sample</b>    | mj cal 7   |
| <b>Acq. Method</b>      | AM 27 THC quant.m     | <b>Operator</b>  | Anne Nord  |
| <b>Sample Position</b>  | P3-G1                 | <b>Comment</b>   |            |
| <b>Injection Volume</b> | 10                    |                  |            |
| <b>Acq. Date-Time</b>   | 1/24/2023 12:28:11 PM |                  |            |
| <b>Sample Info.</b>     |                       |                  |            |

## Sample Chromatogram



| Name     | RT    | Resp.   | S/N                    | Ratio  | S/N    | ISTD Resp. | Final Conc.   |
|----------|-------|---------|------------------------|--------|--------|------------|---------------|
| THC-OH   | 1.364 | 1391973 | 30098.9                | 808.09 | ∞      | 3140550    | 103.155 ng/ml |
| THC-COOH | 1.388 | 1371158 | ∞                      | 245.94 | 4296.5 | 867304     | 256.646 ng/ml |
| THC      | 3.016 | 4172896 | 1700475272<br>968060.0 | 24.25  | 5890.4 | 1386259    | 103.046 ng/ml |